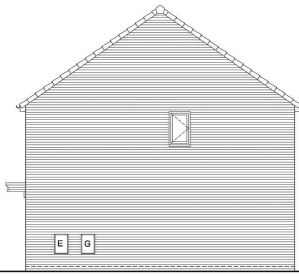
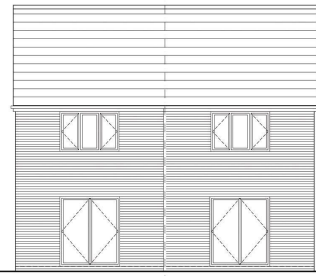




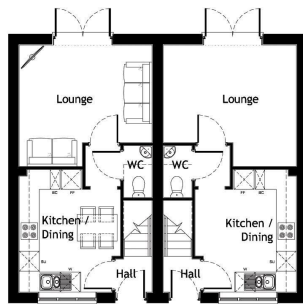
Front Elevation
1:100



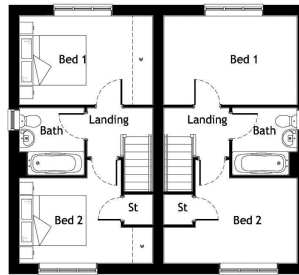
Side Elevation



Rear Elevation



Ground Floor Plan
1:100



First Floor Plan
1:100

Date	Scale	Drawn	CHK
14.11.13	1:100	SJK	KR

Planning Layout

651 HOUSETYPE
OMS

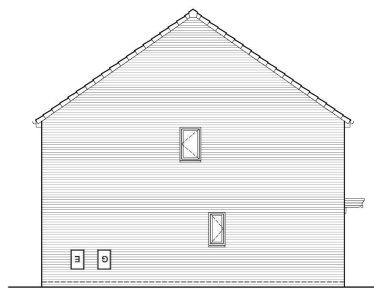
Dwg No 2017/651-PL-01

THIS COPY HAS BEEN MADE BY OR WITH THE AUTHORITY OF RYEDALE DISTRICT COUNCIL PURSUANT TO SECTION 47 OF THE COPYRIGHT DESIGNS AND PATENTS ACT 1988. UNLESS THAT ACT PROVIDES A RELEVANT EXCEPTION TO COPYRIGHT, THE COPY MUST NOT BE COPIED WITHOUT THE PRIOR PERMISSION OF THE COPYRIGHT OWNER.

Keepmoat, The Waterfront, Lakeside Boulevard,
Doncaster, DN4 5PL
Tel: 01302 347605 www.keepmoat.com



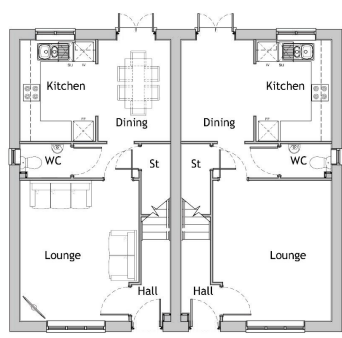
Front Elevation
1:100



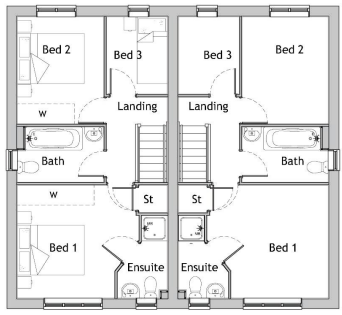
Side Elevation



Rear Elevation



Ground Floor Plan
1:100



First Floor Plan
1:100

Date	Drawn	By	CHK	CHK
18.11.13	SKR	SKR	CHK	KR

Planning Layout

832v2 HOUSETYPE
OMS

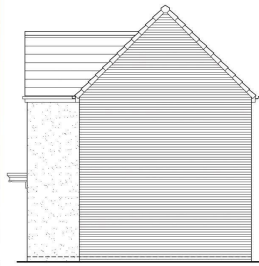
Dwg No 2014/832v2-PL

THIS COPY HAD BEEN MADE BY OR WITH THE AUTHORITY OF RYEDALE DISTRICT COUNCIL PURSUANT TO SECTION 47 OF THE COPYRIGHT DESIGNS AND PATENTS ACT 1988. UNLESS THAT ACT PROVIDES A RELEVANT EXCEPTION TO COPYRIGHT, THE COPY MUST NOT BE COPIED WITHOUT THE PRIOR PERMISSION OF THE COPYRIGHT OWNER.

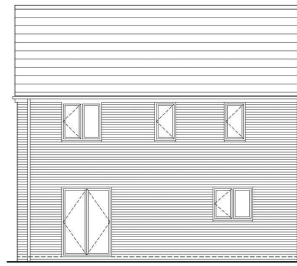
Keepmoat, The Waterfront, Lakeside Boulevard, Doncaster, DN4 5PL
Tel: 01302 347605 www.keepmoat.com



Front Elevation
1:100



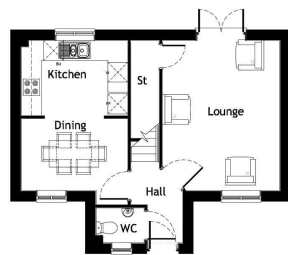
Side Elevation



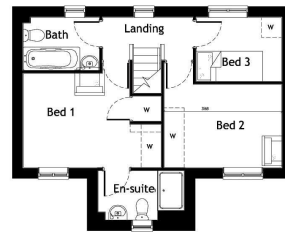
Rear Elevation



Side Elevation



Ground Floor Plan
1:100



First Floor Plan
1:100

Date	Scale	Drawn	CHK	SRK
19.11.13	1:100			

Planning Layout

857 HOUSETYPE
DMS

Dwg No 2014/857-PL

THIS COPY HAS BEEN MADE BY OR WITH THE AUTHORITY OF RYEDALE DISTRICT COUNCIL PURSUANT TO SECTION 47 OF THE COPYRIGHT DESIGNS AND PATENTS ACT 1988. UNLESS THAT ACT PROVIDES A RELEVANT EXCEPTION TO COPYRIGHT, THE COPY MUST NOT BE COPIED WITHOUT THE PRIOR PERMISSION OF THE COPYRIGHT OWNER.

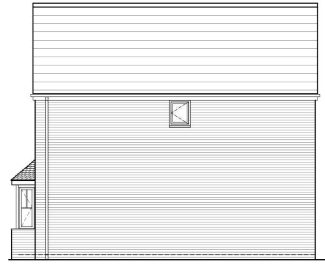
Keepmoat, The Waterfront, Lakeside Boulevard,
Doncaster, DN4 5PL
Tel: 01302 347605 www.keepmoat.com



Front Elevation
1:100



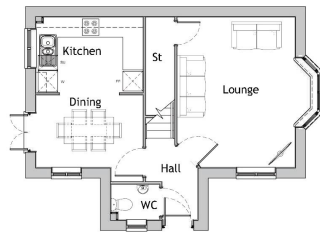
Side Elevation



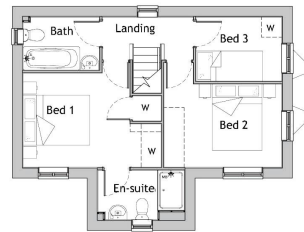
Rear Elevation



Side Elevation



Ground Floor Plan
1:100



First Floor Plan
1:100

Date	Drawn	By
19.11.13	SKR	SKR

Scale	Checked	By
1:100	CHK	KR

Planning Layout

867 HOUSETYPE
OMS

Dwg No	2014/867-PL	Rev	--
--------	-------------	-----	----

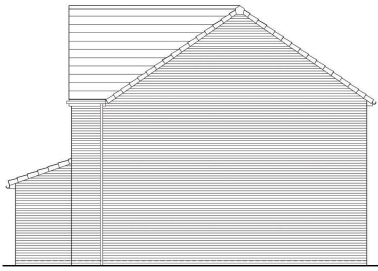
Keepmoat, The Waterfront, Lakeside Boulevard,
Doncaster, DN4 5PL
Tel: 01302 347605 www.keepmoat.com



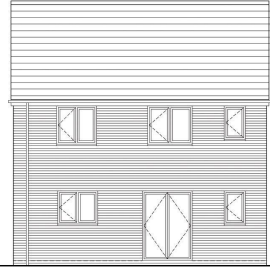
THIS COPY HAS BEEN MADE BY OR WITH THE AUTHORITY OF RYEDALE DISTRICT COUNCIL PURSUANT TO SECTION 43 OF THE COPYRIGHT DESIGNS AND PATENTS ACT 1988. UNLESS THAT ACT PROVIDES A RELEVANT EXCEPTION TO COPYRIGHT, THE COPY MUST NOT BE COPIED WITHOUT THE PRIOR PERMISSION OF THE COPYRIGHT OWNER.



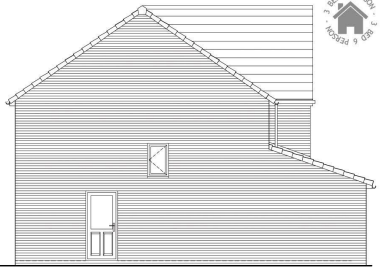
Front Elevation
1:100



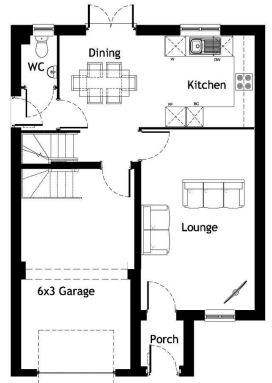
Side Elevation



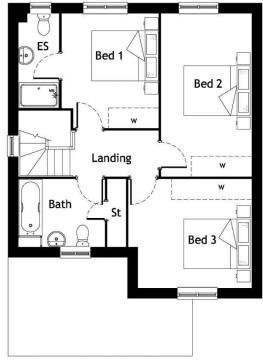
Rear Elevation



Side Elevation



Ground Floor Plan
1:100



First Floor Plan
1:100

DATE	20.06.17	DRAWN	SKL
SCALE	1:100	CHK	SKL

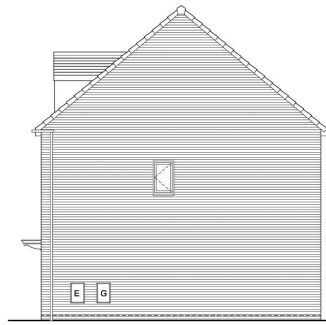
Sketch Layout	
1032 Houstype (6x3 version of 955)	
Dwg No	2014/1032-SK
Rev	A

THIS COPY HAD BEEN MADE BY OR WITH THE AUTHORITY OF RYEDALE DISTRICT COUNCIL PURSUANT TO SECTION 47 OF THE COPYRIGHT DESIGNS AND PATENTS ACT 1988. UNLESS THAT ACT PROVIDES A RELEVANT EXCEPTION TO COPYRIGHT, THE COPY MUST NOT BE COPIED WITHOUT THE PRIOR PERMISSION OF THE COPYRIGHT OWNER.

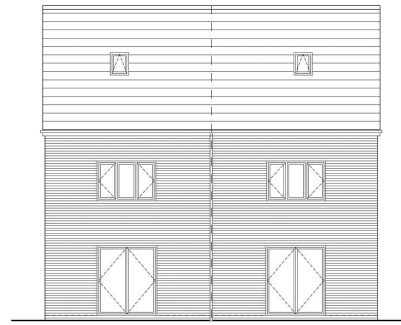




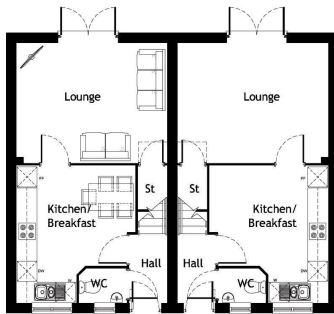
Front Elevation
1:100



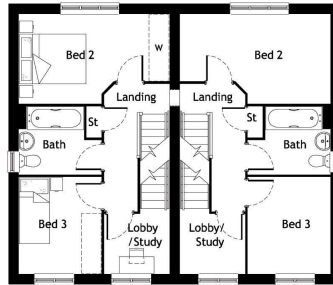
Side Elevation



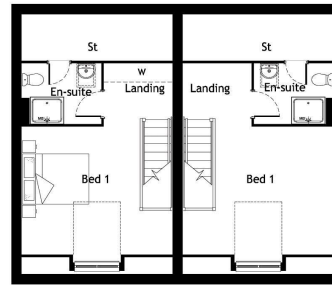
Rear Elevation



Ground Floor Plan
1:100



First Floor Plan
1:100



Second Floor Plan
1:100

DATE	15.11.13	DRAWN	SK
SCALE	1:100	CHK	KR

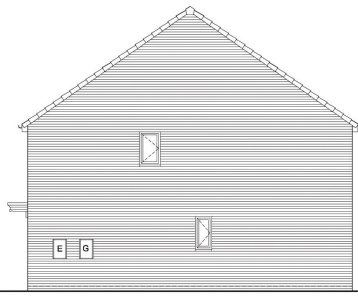
Planning Layout	
1054v1 HOUSETYPE OMS	
Dwg No	2014/1054v1-PL09A

THIS COPY HAS BEEN MADE BY OR WITH THE AUTHORITY OF RYEDALE DISTRICT COUNCIL PURSUANT TO SECTION 47 OF THE COPYRIGHT DESIGNS AND PATENTS ACT 1988. UNLESS THAT ACT PROVIDES A RELEVANT EXCEPTION TO COPYRIGHT, THE COPY MUST NOT BE COPIED WITHOUT THE PRIOR PERMISSION OF THE COPYRIGHT OWNER.

Keepmoat, The Waterfront, Lakeside Boulevard,
Doncaster, DN4 5PL
Tel: 01302 347605 www.keepmoat.com



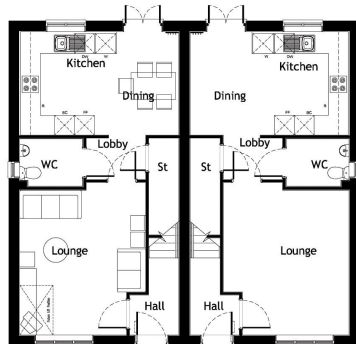
Front Elevation
1:100



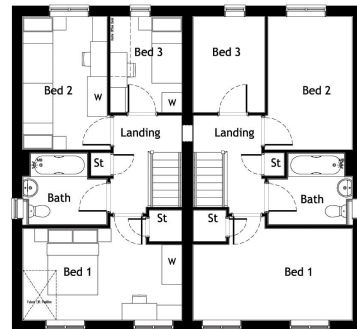
Side Elevation



Rear Elevation



Ground Floor Plan
1:100



First Floor Plan
1:100

THIS COPY HAS BEEN MADE BY OR WITH THE AUTHORITY OF RYEDALE DISTRICT COUNCIL PURSUANT TO SECTION 40 OF THE COPYRIGHT DESIGNS AND PATENTS ACT 1988. UNLESS THAT ACT PROVIDES A RELEVANT EXCEPTION TO COPYRIGHT, THE COPY MUST NOT BE COPIED WITHOUT THE PRIOR PERMISSION OF THE COPYRIGHT OWNER.

DATE	05.11.13	DRAWN	SKR
SCALE	1:100	CHK	KR

Planning Layout

'Hogarh' (953v2) HOUSETYPE
DQS/LTH

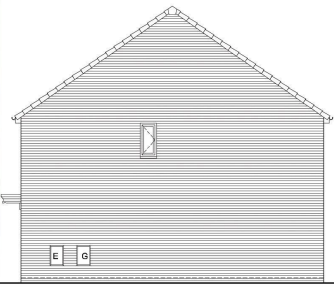
Dwg No 2014/953v2-PL A

Keepmoat, The Waterfront, Lakeside Boulevard,
Doncaster, DN4 9SL
Tel: 01302 347605 www.keepmoat.com

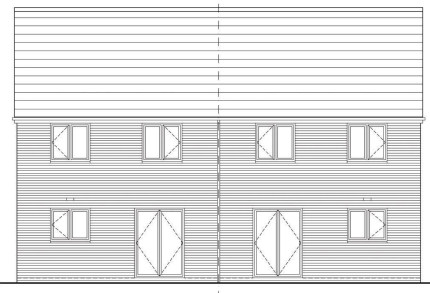




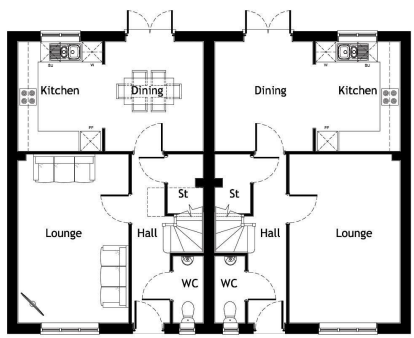
Front Elevation
1:100



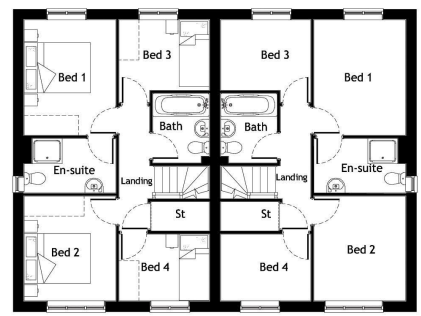
Side Elevation



Rear Elevation



Ground Floor Plan
1:100



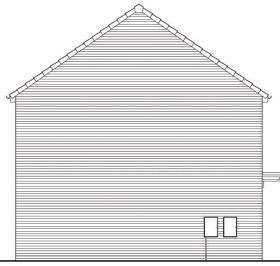
First Floor Plan
1:100

THIS COPY HAD BEEN MADE BY OR WITH THE AUTHORITY OF RYEDALE DISTRICT COUNCIL PURSUANT TO SECTION 47 OF THE COPYRIGHT DESIGNS AND PATENTS ACT 1988. UNLESS THAT ACT PROVIDES A RELEVANT EXCEPTION TO COPYRIGHT, THE COPY MUST NOT BE COPIED WITHOUT THE PRIOR PERMISSION OF THE COPYRIGHT OWNER.

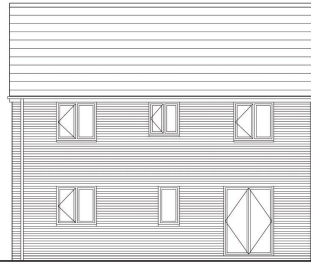
Per Issues		Date	Drawn	By	CHK
DATE	20.11.13	DRAWN	SK		
SCALE	1:100	CHK	RR		
Planning Layout					
1028 HOUSETYPE OMS					
Dwg No	2014/1028-PL	Rev	--		
Keepmoat, The Waterfront, Lakeside Boulevard, Doncaster, DN4 5PL Tel: 01502 347605 www.keepmoat.com					



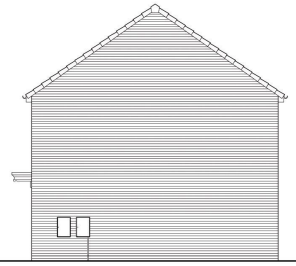
Front Elevation



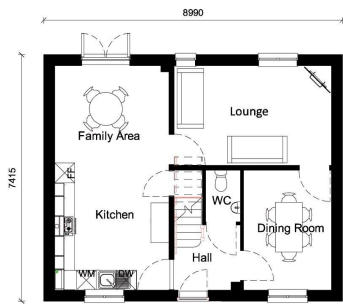
Side Elevation



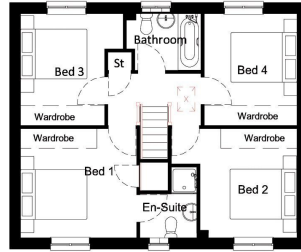
Rear Elevation



Side Elevation



Ground Floor Plan
1:100



First Floor Plan
1:100

THIS COPY HAS BEEN MADE BY OR WITH THE AUTHORITY OF RYEDALE DISTRICT COUNCIL PURSUANT TO SECTION 47 OF THE COPYRIGHT DESIGNS AND PATENTS ACT 1988. UNLESS THAT ACT PROVIDES A RELEVANT EXCEPTION TO COPYRIGHT, THE COPY MUST NOT BE COPIED WITHOUT THE PRIOR PERMISSION OF THE COPYRIGHT OWNER.

DATE		DRAWN	
10.04.18	OM	OM	OM
SCALE		CHK	
1:100	OM	OM	OM
Planning Layout			
1244 HOUSETYPE			
DMS			
Dwg No	2014/1244-PL	Rev	--
<small>Keepmoat, The Waterfront, Lakeside Boulevard, Doncaster, DN4 5PL. Tel: 01302 347505 www.keepmoat.com</small>			

Langton Road, Norton.



Schedule of Accommodation				
Name	Storey/Storeys	Units	No. of Units	%
Private Sites				
101	2	20	20	10%
102	2	20	20	10%
103	2	20	20	10%
104	2	20	20	10%
105	2	20	20	10%
106	2	20	20	10%
107	2	20	20	10%
108	2	20	20	10%
109	2	20	20	10%
110	2	20	20	10%
111	2	20	20	10%
112	2	20	20	10%
113	2	20	20	10%
114	2	20	20	10%
115	2	20	20	10%
116	2	20	20	10%
117	2	20	20	10%
118	2	20	20	10%
119	2	20	20	10%
120	2	20	20	10%
121	2	20	20	10%
122	2	20	20	10%
123	2	20	20	10%
124	2	20	20	10%
125	2	20	20	10%
126	2	20	20	10%
127	2	20	20	10%
128	2	20	20	10%
129	2	20	20	10%
130	2	20	20	10%
131	2	20	20	10%
132	2	20	20	10%
133	2	20	20	10%
134	2	20	20	10%
135	2	20	20	10%
136	2	20	20	10%
137	2	20	20	10%
138	2	20	20	10%
139	2	20	20	10%
140	2	20	20	10%
141	2	20	20	10%
142	2	20	20	10%
143	2	20	20	10%
144	2	20	20	10%
145	2	20	20	10%
146	2	20	20	10%
147	2	20	20	10%
148	2	20	20	10%
149	2	20	20	10%
150	2	20	20	10%
151	2	20	20	10%
152	2	20	20	10%
153	2	20	20	10%
154	2	20	20	10%
155	2	20	20	10%
156	2	20	20	10%
157	2	20	20	10%
158	2	20	20	10%
159	2	20	20	10%
160	2	20	20	10%
161	2	20	20	10%
162	2	20	20	10%
163	2	20	20	10%
164	2	20	20	10%
165	2	20	20	10%
166	2	20	20	10%
167	2	20	20	10%
168	2	20	20	10%
169	2	20	20	10%
170	2	20	20	10%
171	2	20	20	10%
172	2	20	20	10%
173	2	20	20	10%
174	2	20	20	10%
175	2	20	20	10%
176	2	20	20	10%
177	2	20	20	10%
178	2	20	20	10%
179	2	20	20	10%
180	2	20	20	10%
181	2	20	20	10%
182	2	20	20	10%
183	2	20	20	10%
184	2	20	20	10%
185	2	20	20	10%
186	2	20	20	10%
187	2	20	20	10%
188	2	20	20	10%
189	2	20	20	10%
190	2	20	20	10%
191	2	20	20	10%
192	2	20	20	10%
193	2	20	20	10%
194	2	20	20	10%
195	2	20	20	10%
196	2	20	20	10%
197	2	20	20	10%
198	2	20	20	10%
199	2	20	20	10%
200	2	20	20	10%

The Council of the City of London has approved the proposed development on the basis of the information provided. The Council does not warrant the accuracy of the information provided and does not accept any liability for any loss or damage arising from the use of the information provided. The Council also does not warrant the accuracy of the information provided and does not accept any liability for any loss or damage arising from the use of the information provided.

SURFACE FINISHES	
[Symbol]	Asphalt
[Symbol]	Gravel
[Symbol]	Grass
[Symbol]	Concrete
[Symbol]	Brick
[Symbol]	Stone
[Symbol]	Wood
[Symbol]	Water
[Symbol]	Soil
[Symbol]	Plant
[Symbol]	Light
[Symbol]	Sound
[Symbol]	Other

BOUNDARY TREATMENTS	
[Symbol]	Concrete
[Symbol]	Brick
[Symbol]	Stone
[Symbol]	Wood
[Symbol]	Water
[Symbol]	Soil
[Symbol]	Plant
[Symbol]	Light
[Symbol]	Sound
[Symbol]	Other

KEEPMOAT

PLANNING LAYOUT

Proposed Residential Development
Langton Road, Norton.

Scale: 1:1000

North Arrow

MPSL

THIS PLAN IS THE PROPERTY OF THE ARCHITECT AND SHOULD NOT BE REPRODUCED OR COPIED IN ANY MANNER WITHOUT THE WRITTEN PERMISSION OF THE ARCHITECT. THE ARCHITECT ACCEPTS NO LIABILITY FOR ANY LOSS OR DAMAGE ARISING FROM THE USE OF THIS PLAN.